

"Enforcer 55" Universal Puller

55 Ton Capacity



- 1 Hydraulic lift system for easy, precise position of puller.
- 2 Unique dual pump arrangement: Low pressure pump positions, holds and opens jaws. The high pressure pump advances and retracts the pushing cylinder without releasing clamped jaws.
- 3 Hydraulically-actuated jaws. Cylinder moves in or out to provide a safe, secure grip on workpiece.
- 4 Puller can be assembled in 2 or 3 jaw configurations.
- 5 Choice of cylinder with a 3 1/4" or 13 1/4" stroke.
- 6 Self-centering: Center cylinder on work; puller jaws will automatically grip work evenly.
- 7 Super Grip-O-Matic® feature means the harder the pull, the tighter the puller jaws grip. No chains or cages required to keep puller jaws from slipping or springing off the part being pulled.
- 8 Guards at pinch points protect operator.
- 9 Cart's swivel casters give ease of mobility.
- 10 Large wheels make movement of cart easy.
- 11 Puller can be mounted on cart 90 degrees to right or left of puller cart centerline, permitting use in tight quarters, such as between machinery.

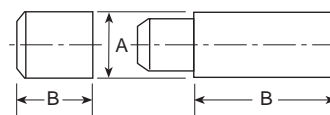


NOTE: Four cylinder extensions (not pictured) are included. The included lifting eyes (not pictured) permit use of an overhead crane to raise entire assembly.

Conversion kit

No. 251468 – Kit converts PH553C series to PH5532CL series. Jaws are 12" longer. Kit contains three jaws and six straps with guards. Wt., 250 lbs.

Pushing adapters



251002

350593
350594
350637

Order No.	A	B	Qty.*
251002	2 3/4"	2 3/4"	1
350593	2 3/4"	6"	2
350594	2 3/4"	3"	1
350637	2 3/4"	10"	1

*Number of adapters supplied with each Enforcer

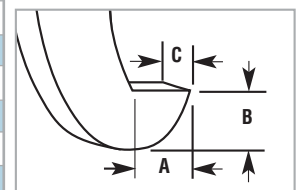
ORDERING INFORMATION

*Cart and Puller (cart width is 32")

Order Number	Min. Spread	Reach at Min. Spread	Max. Spread	Reach at Max Spread	Overall Length*	Cylinder Stroke	Power Source Requirements	Prod. Weight (lbs.)
PH553C	4"	22"	48"	14"	90"	6 1/4"	115 V, 60Hz, 25 Amp Cap.	749
PH553C13	4"	15"	48"	7"	90"	13 1/4"	115V, 60Hz, 25 Amp Cap.	776
PH553CL	2 1/2"	23 5/8"	45 1/4"	29"	102"	6 1/4"	115V, 60Hz, 25 Amp Cap.	809
PH553CL13	2 1/2"	25 5/8"	45 1/4"	22"	102"	13 1/4"	115V, 60Hz, 25 Amp Cap.	836
PH553C-230	4"	22"	48"	14"	90"	6 1/4"	230V, 50/60Hz, 15 Amp Cap.	749
PH553C13-230	4"	15"	48"	7"	90"	13 1/4"	230V, 50/60Hz, 15 Amp Cap.	776
PH553CL-230	2 1/2"	32 5/8"	45 1/4"	29"	102"	6 1/4"	230V, 50/60Hz, 15 Amp Cap.	809
PH553CL13-230	2 1/2"	25 5/8"	45 1/4"	22"	102"	13 1/4"	230V, 50/60Hz, 15 Amp Cap.	836

Puller jaw tip dimensions

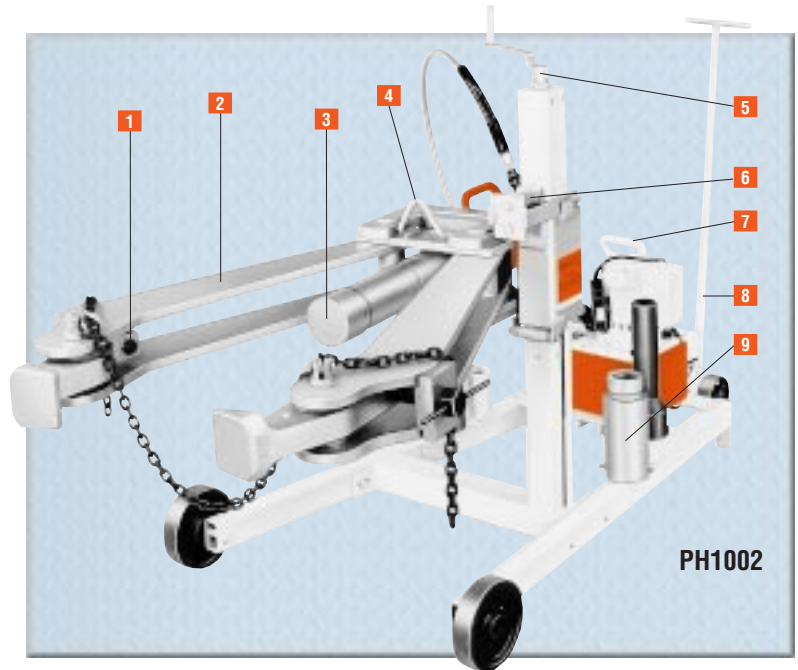
A	B	C
7/8"	1 1/4"	1 7/8"



“Enforcer 100” Universal Puller

100 Ton Capacity

- 1 Adjustable jaws mean they always pull on a flat surface. Retaining chain holds jaws in place during positioning.
- 2 Grip-O-Matic® feature means jaws grip progressively tighter as more pulling force is applied.
- 3 100 ton hydraulic cylinder is single-acting, spring return type with a maximum working pressure of 10,000 psi.
- 4 Lifting bracket allows puller to be lifted if the work-piece center is more than 36" off the floor.
- 5 Adjusting screw allows operator to move vertical position of the puller.
- 6 Spring loaded feature means Enforcer 100 will align itself on uneven pulls.
- 7 Hydraulic pump is a 2-stage, high pressure unit controlled by remote hand switch with 25 foot cord.
- 8 Tow bar provides puller with plenty of mobility.
- 9 Pushing adapters have a diameter of 4 1/8" and 2 1/2".



“Enforcer 100” universal puller

No. PH1002 – 100 ton, 2-jaw universal hydraulic puller. Includes: 2-jaw Grip-O-Matic® puller, PE552S 2-speed electric/hydraulic power unit, C10010C 100 ton hydraulic cylinder with 10 1/4" stroke and six adapters. Wt., 890 lbs.

No. PH1002J – Same as PH1002, but without hydraulic power unit. Wt., 825 lbs.

PE552S – Pump only. 1 1/8 hp, 115 volt, 50/60Hz, single phase, draws 25 amps at full load. Also available in 220 volt, 50Hz.

Note: For 220 volt, 50 Hz applications, order Part No. PH1002-220

An ideal puller for steel mills, mines, oil fields, utility projects, paper mills, construction sites, railroads, airline shops, shipyards or anywhere else where large equipment and machinery pose tough maintenance challenges.



ORDERING INFORMATION *Cart size is 36 1/2" W x 69" L x 44 1/4" H **See current price list for shipping weights.

Order Number	A Min. Spread	B Reach at Min. Spread	C Max. Spread	D Reach at Max Spread	E F G Puller Jaw Tip	Vertical Height Adjust.	Overall Length	Max. Thickness Workpiece	Wheel Dia.	H Cylinder Stroke	Power Source Requirements
PH1002	15"	42"	48"	34"	1" 2 1/4" 5"	12" - 36"	94"	12"	8"	10 1/4"	115 V, 50/60Hz, 25 Amp Cap.
PH1002J	15"	42"	48"	34"	1" 2 1/4" 5"	12" - 36"	94"	12"	8"	10 1/4"	—

Ram extensions

Order No.	Amount included with puller	J	K	L	M	N
44745 (Push Adapter)	1	4 1/8"	—	13 1/2"	2 1/2"	—
44766 (Ext. Adapter)	4	4 1/8"	—	—	—	8"
303045 (Push Adapter)	1	4 1/8"	13 1/8"	—	—	—

