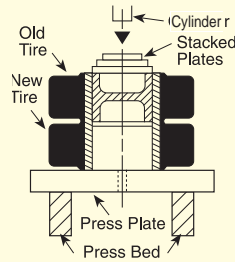


## Rubber tire removing/installing set

Now an easy way to press solid rubber tires. The TPP200 uses plates instead of combination rings to press a rim from an old tire into a new one. Plates are stacked so none is more than 2 in. smaller than the one under it to keep the plates from bending. They can be used on any Power Team press with 55 ton capacity or more. **NOTE:** Many tires require 100 tons of force or more, depending on tire size and condition. These plates withstand max. force of 150 tons.



Pressing rim into new tire on Power Team Press.

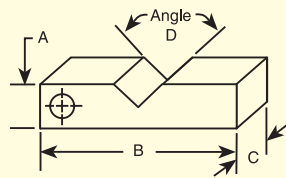
Set No. TPP200		
Order No.	Tire Size I.D.	Plate O.D.
TPP1	4"	3 <sup>7</sup> / <sub>8</sub> "
TPP2	5"	4 <sup>7</sup> / <sub>8</sub> "
TPP3	6", 6 <sup>1</sup> / <sub>4</sub> "	5 <sup>7</sup> / <sub>8</sub> "
TPP4	6 <sup>1</sup> / <sub>2</sub> "	6 <sup>3</sup> / <sub>8</sub> "
TPP5	8"	7 <sup>7</sup> / <sub>8</sub> "
TPP6	10"	9 <sup>7</sup> / <sub>8</sub> "
TPP7	10 <sup>1</sup> / <sub>2</sub> "	10 <sup>3</sup> / <sub>8</sub> "
TPP8	11 <sup>1</sup> / <sub>4</sub> "	11 <sup>7</sup> / <sub>8</sub> "
TPP9	12", 12 <sup>1</sup> / <sub>2</sub> "	11 <sup>7</sup> / <sub>8</sub> "
TPP10	14"	13 <sup>7</sup> / <sub>8</sub> "
TPP11	15"	14 <sup>7</sup> / <sub>8</sub> "
TPP12	16"	15 <sup>7</sup> / <sub>8</sub> "
TPP13	17 <sup>3</sup> / <sub>4</sub> "	17 <sup>3</sup> / <sub>8</sub> "
TPS6	Spacer/Pushing Adapter	3 <sup>3</sup> / <sub>4</sub> " x 6"
TBP1622	Bed Plate	16" x 22" x 2"



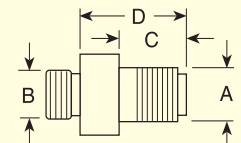
**No. TPP200** – Tire press plate set. Includes 13 press plates, spacer pushing adapter and press bed plate. For use on solid rubber tires from 4" to 17<sup>3</sup>/<sub>4</sub>" I.D.

## Press accessories, "V" blocks & threaded adapters

V-BLOCKS (in.)				
Order No.	Width A	Length B	Thick C	Angle D
1890	2	9	1 <sup>1</sup> / <sub>4</sub>	120°
1891	2 <sup>1</sup> / <sub>2</sub>	11 <sup>1</sup> / <sub>2</sub>	1 <sup>3</sup> / <sub>4</sub>	
1892	3 <sup>1</sup> / <sub>2</sub>	14	2	
1893	5	14	1 <sup>1</sup> / <sub>2</sub>	
207395	5 <sup>1</sup> / <sub>4</sub>	23	2 <sup>1</sup> / <sub>2</sub>	



THREADED ADAPTER DIMENSIONS (in.)				
Adapter No.	A	B	C	D
38597	1- 8	1- 8	3/4	1 <sup>1</sup> / <sub>16</sub>
38953	1 <sup>1</sup> / <sub>4</sub> - 7	1 <sup>1</sup> / <sub>2</sub> - 16	2 <sup>3</sup> / <sub>4</sub>	4 <sup>7</sup> / <sub>8</sub>
37368	1 <sup>1</sup> / <sub>8</sub> - 5 <sup>1</sup> / <sub>2</sub>	—	1 <sup>11</sup> / <sub>16</sub>	2 <sup>1</sup> / <sub>2</sub>
43562	2 <sup>1</sup> / <sub>4</sub> - 12	—	2 <sup>1</sup> / <sub>4</sub>	3
38954	1 <sup>1</sup> / <sub>8</sub> - 5 <sup>1</sup> / <sub>2</sub>	1 <sup>1</sup> / <sub>2</sub> - 8	3 <sup>1</sup> / <sub>4</sub>	4 <sup>7</sup> / <sub>16</sub>
43563	2 <sup>1</sup> / <sub>4</sub> - 12	2 <sup>3</sup> / <sub>4</sub> - 12	2 <sup>1</sup> / <sub>4</sub>	3 <sup>3</sup> / <sub>16</sub>
46070	2 <sup>1</sup> / <sub>4</sub> - 12	2 - 4 <sup>1</sup> / <sub>2</sub>	2 <sup>1</sup> / <sub>4</sub>	3 <sup>3</sup> / <sub>16</sub>

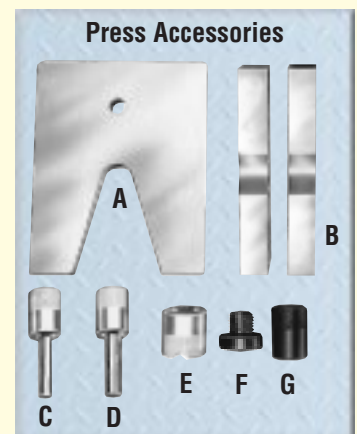


## Press accessory kit

Make your Power Team press even more versatile with one of these accessory sets. These sets will eliminate makeshift set-ups. Many of these items can be used with pullers you already have.

## ORDERING INFORMATION

Use With Press:	Order No.	A V-Throat Press Plate	B V-Blocks	C Pushing Adapter	D Pushing Adapter	E V-Pushing Adapter	F Threaded Adapter		G Pushing Adapter
							Single-Acting Cyls.	Double-Acting Cyls.	
10 Ton	SPA10	1888	1890 (Pr.)	201923 1/2" dia. shank	201454 3/4" dia. shank	34806	Included in Set 38597 38597		—
25 Ton	SPA25	1889	1891 (Pr.)	34510 3/4" dia. shank	34511 1" dia. shank	34807	Included in Set 38953 38953		—
55 Ton	SPA55	—	1892 (Pr.)	34755 1" dia. shank	34756 1 <sup>1</sup> / <sub>2</sub> " dia. shank	34808	Not Included Order Separately 37368 38954		—
80/100 Ton	SPA100	—	1893** (Pr.)	—	—	36469	Not Included Order Separately 43562 43563 46070***		21332
150/200 Ton	SPA200	—	207395 (Pr.)	—	44458 2 <sup>1</sup> / <sub>4</sub> " dia. shank	44457	None*		—



**CAUTION:** Pushing adapters are designed for use with specific shaft sizes, and depending on the condition of the shaft ends, the adapter may not withstand the full press tonnage. Always use a protective blanket or other suitable guard when pressing.

\* Pushing adapters thread directly into RD15013 and RD20013 cylinders.

\*\* V-blocks, No. 1893, are recommended for use with 80-ton Roll-Bed press. Not recommended for use with 100 ton Roll Bed.

\*\*\* For 80-ton Roll-Bed press.

**NOTE:** Individual press accessories may be ordered separately.