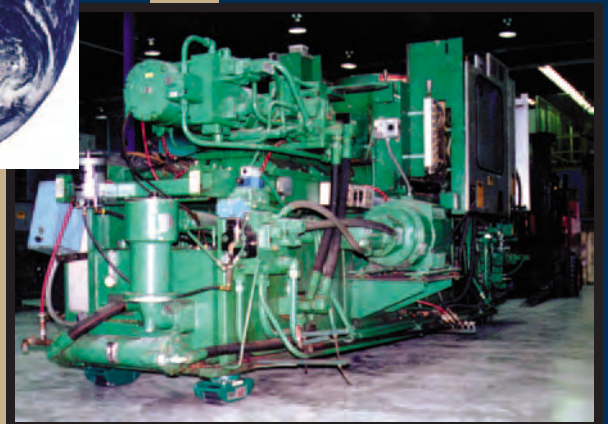
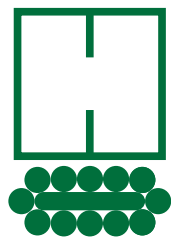


HILMAN ROLLERS

WWW.HILMANROLLERS.COM

PRODUCTS THAT MOVE THE HEAVYWEIGHTS





HILMAN ROLLERS

WWW.HILMANROLLERS.COM

HILMAN ROLLERS

Since 1953, **Hilman Rollers** has produced high capacity roller dollies of the highest quality. Early customers used **Hilman Rollers** primarily for installing and relocating machinery. Over the years **Hilman Rollers** have been put to the test in a much greater variety of applications.

Some markets where **Hilman Rollers** have proven to be useful:

<input type="checkbox"/>		<input type="checkbox"/>	<input type="checkbox"/>	Aerospace
<input type="checkbox"/>	<input type="checkbox"/>	<input type="checkbox"/>	<input type="checkbox"/>	Oil & Gas Exploration
<input type="checkbox"/>	<input type="checkbox"/>	<input type="checkbox"/>	<input type="checkbox"/>	Refineries & Petrochemical Plants
<input type="checkbox"/>	<input type="checkbox"/>	<input type="checkbox"/>	<input type="checkbox"/>	Bridge Construction
<input type="checkbox"/>	<input type="checkbox"/>	<input type="checkbox"/>	<input type="checkbox"/>	Nuclear & Electric Power Generation
<input type="checkbox"/>	<input type="checkbox"/>	<input type="checkbox"/>	<input type="checkbox"/>	Structural Moves
<input type="checkbox"/>	<input type="checkbox"/>	<input type="checkbox"/>	<input type="checkbox"/>	Research Laboratories
<input type="checkbox"/>	<input type="checkbox"/>	<input type="checkbox"/>	<input type="checkbox"/>	Shield Doors
<input type="checkbox"/>	<input type="checkbox"/>	<input type="checkbox"/>	<input type="checkbox"/>	Shipbuilding & Marine Structures
<input type="checkbox"/>	<input type="checkbox"/>	<input type="checkbox"/>	<input type="checkbox"/>	Quick Die Transfer
<input type="checkbox"/>	<input type="checkbox"/>	<input type="checkbox"/>	<input type="checkbox"/>	Manufactured Housing
<input type="checkbox"/>	<input type="checkbox"/>	<input type="checkbox"/>	<input type="checkbox"/>	Mining
<input type="checkbox"/>	<input type="checkbox"/>	<input type="checkbox"/>	<input type="checkbox"/>	Railroads & Transportation
<input type="checkbox"/>	<input type="checkbox"/>	<input type="checkbox"/>	<input type="checkbox"/>	Fabrication
<input type="checkbox"/>	<input type="checkbox"/>	<input type="checkbox"/>	<input type="checkbox"/>	Commercial & Industrial

Hilman Rollers' mission statement summarizes our commitment to our customers.

Hilman Rollers strives to provide the finest quality products at a fair price and in a timely manner, to work as equal partners with our customers and distributors by assessing their needs and providing the right products to meet or exceed those requirements; to constantly improve quality and reduce cost through continued improvement of each internal department; and to provide proper support by maintaining a knowledgeable staff who possess the tools and technology to perform their jobs.

Hilman Rollers can design, prototype, test and produce steel fabrications such as transfer tables and carts, heavy industrial conveyor lines as well as the track that the rollers ride on.

Hilman has gained the approval of DNV, Lloyd's, BV, SGS, ABS and other third parties; and **Hilman** is certified ISO-9001:2000 and CE approved.

Our staff is available to go anywhere in the world to consult with you about your projects.





FT SERIES

- **DELUXE KITS 15 - 60 TONS**
- **ECONOMY SETS 15 - 200 TONS**

Everything required to make heavy moves up to 200 tons is included in **Hilman's** Deluxe Kits and Economy Sets! Both include four swivel locking **Hilman Rollers** with either padded or diamond steel tops and two steering handles. Four preload pads are also included with rollers having the SLD style top. Sets contain full length steering handles. Kits contain knock down handles that fit into a sturdy storage case. Kit cases are lockable and have lifting grips for easy handling, providing protection from exposure and theft. Each kit or set provides the necessary gear to tackle a moving project up to that respective capacity.



Deluxe FT Kit



Economy FT Set

KIT / SET	KIT / SET	KIT / SET INCLUDES	WEIGHT
CAPACITY (TONS)	PRODUCT NUMBER	(All KITS include steel cases) Kit Box KD-D2: 27.75" (705mm) x 14.75" (375mm) x 9.63" (245mm)	lb. kg.
15	KRS-15-SLP	(4) 3.75-SLP Rollers; (2) KDH48F Handles	203 92
15	RS-15-SLP	(4) 3.75-SLP Rollers; (2) H36F 36" Handles	156 71
15	KRS-15-SLD	(4) 3.75-SLD Rollers; (4) P-1 Preload Pads; (2) KDH48F Handles	203 92
15	RS-15-SLD	(4) 3.75-SLD Rollers; (4) P-1 Preload Pads; (2) H36F 36" Handles	156 71
30	KRS-30-SLP	(4) 7.5-SLP Rollers; (2) KDH48F Handles	215 98
30	RS-30-SLP	(4) 7.5-SLP Rollers; (2) H48F 48" Handles	172 78
30	KRS-30-SLD	(4) 7.5-SLD Rollers; (4) P-1 Preload Pads; (2) KDH48F Handles	215 98
30	RS-30-SLD	(4) 7.5-SLD Rollers; (4) P-1 Preload Pads; (2) H48F 48" Handles	172 78
40	KRS-40-SLP	(4) 10-SLP Rollers; (2) KDH48F Kit Size Handles	219 99
40	RS-40-SLP	(4) 10-SLP Rollers; (2) H48F 48" Handles	176 80
40	KRS-40-SLD	(4) 10-SLD Rollers; (4) P-1 Preload Pads; (2) KDH48F Handles	219 99
40	RS-40-SLD	(4) 10-SLD Rollers; (4) P-1 Preload Pads; (2) H48F 48" Handles	176 80
60	KRS-60-SLP	(4) 15-SLP Rollers; (2) KDH48F Kit Size Handles	255 116
60	RS-60-SLP	(4) 15-SLP Rollers; (2) H48F 48" Handles	212 96
60	KRS-60-SLD	(4) 15-SLD Rollers; (4) P-1 Preload Pads; (2) KDH48F Handles	259 117
60	RS-60-SLD	(4) 15-SLD Rollers; (4) P-1 Preload Pads; (2) H48F 48" Handles	216 98
120	RS-120-SLP	(4) 30-SLP Rollers; (2) H60F 60" Handles	542 256
120	RS-120-SLD	(4) 30-SLD Rollers; (4) P-2 Preload Pads; (2) H60F 60" Handles	540 245
200	RS-200-SLP	(4) 50-SLP Rollers; (2) H60F 60" Handles	834 378
200	RS-200-SLD	(4) 50-SLD Rollers; (4) P-2 Preload Pads; (2) H60F 60" Handles	848 385

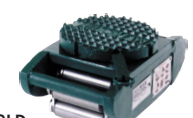
• INDIVIDUAL ROLLERS 3.75 - 50 TONS

With six capacities, two moving types (rigid and swivel locking) and three top styles (padded, diamond steel and smooth steel), there's a model perfect for almost every heavy moving applications in this **Hilman Rollers** series! For straight line moves, specify the rigid roller. For turns, even in the tightest of corners, use the swivel locking rollers. The swivel-locking type combines swivel and rigid designs with spring loaded locks that can engage every 45 degrees. Steering handles are available for Swivel Lock types in 3 lengths. H36F (36" / 914 mm), H48" (48" / 1219 mm) and H60F (60" / 1524 mm).

FT Series **Hilman Rollers** have three versatile top plates. "D" tops have a spike-like steel grid able to grip into wood and provide a secure move for crated or palletized equipment. "P" tops, with built-in neoprene pad, allow some compression and provide a non-slip surface, a versatile choice for moving on less than perfect floors or for moving metal based machines. "S" tops have smooth steel top, ideal for mounting the rollers to equipment or as a base unit for a variety of top modifications.

SWIVEL-LOCKING

RIGID



CAPACITY (TONS)	PRODUCT NUMBER	TOP STYLE	HEIGHT in	mm	WIDTH in	mm	LENGTH in	mm	WEIGHT lb	kg	CONTACT ROLLS
3.75*	3.75-SLP	SWIVEL	5	127	5-3/4	146	10-1/2	267	34	15	5
7.5*	7.5-SLP	SWIVEL	5-1/4	133	5-3/4	146	10-1/2	267	38	17	5
10*	10-SLP	LOCKING	5-1/4	133	5-3/4	146	10-1/2	267	38	17	5
15	15-SLP	PADDED	5-1/8	130	6-3/8	162	12-3/4	324	49	22	6
30*	30-SLP		8	203	8	203	15	381	122	55	6
50*	50-SLP		8-15/16	227	8	203	21	533	193	88	7
3.75*	3.75-SLD	SWIVEL	4-3/4	121	5-3/4	146	10-1/2	267	34	15	5
7.5*	7.5-SLD	LOCKING	5	127	5-3/4	146	10-1/2	267	37	17	5
10*	10-SLD	WITH	5	127	5-3/4	146	10-1/2	267	37	17	5
15	15-SLD	DIAMOND	4-7/8	124	6-3/8	162	12-3/4	324	49	22	6
30	30-SLD	STEEL	7-1/32	179	8	203	15	381	118	54	6
50	50-SLD	GRID	8-1/16	205	8	203	21	533	189	86	7
3.75*	3.75-SLS		4-5/8	117	6	152	10-1/2	267	35	16	5
7.5*	7.5-SLS	SWIVEL	4-7/8	124	6	152	10-1/2	267	38	17	5
10*	10-SLS	LOCKING	4-7/8	124	6	152	10-1/2	267	38	17	5
15	15-SLS	WITH	4-3/4	121	6-3/8	162	12-3/4	324	50	23	6
30	30-SLS	SMOOTH	7-15/16	202	8	203	15	381	119	54	6
50	50-SLS	STEEL	7-15/16	202	8	203	20-7/8	530	191	87	7
3.75*	3.75-RP		4-3/16	106	5-3/4	146	10-1/2	267	29	13	5
7.5*	7.5-RP		4-7/16	113	5-3/4	146	10-1/2	267	33	15	5
10*	10-RP	RIGID	4-7/16	113	5-3/4	146	10-1/2	267	33	15	5
15	15-RP	PADDED	4-5/16	110	6-3/8	162	12-3/4	324	42	19	6
30*	30-RP		6-3/4	171	8	203	15	381	107	49	6
50*	50-RP		7-3/4	197	8	203	21	533	179	81	7
3.75*	3.75-RD		4-1/16**	103	5-5/8	143	10-1/2	267	29	13	5
7.5*	7.5-RD	RIGID	4-5/16**	110	5-5/8	143	10-1/2	267	32	15	5
10*	10-RD	WITH	4-5/16**	110	5-3/4	146	10-1/2	267	32	15	5
15	15-RD	DIAMOND	4-3/32**	104	6-3/8	162	12-3/4	324	38	17	6
30*	30-RD	STEEL	6-1/8**	156	8	203	15	381	105	48	6
50*	50-RD	GRID	7-1/8**	181	8	203	21	533	176	80	7
3.75*	3.75-RS		3-11/16	94	5-5/8	143	10-1/2	267	29	13	5
7.5*	7.5-RS	RIGID	3-15/16	100	5-5/8	143	10-1/2	267	32	15	5
10*	10-RS	WITH	3-15/16	100	5-5/8	143	10-1/2	267	32	15	5
15	15-RS	SMOOTH	3-13/16	97	6-3/8	162	12-3/4	324	43	20	6
30*	30-RS	STEEL	5-3/4	146	8	203	15	381	105	48	6
50*	50-RS		6-3/4	171	8	203	21	533	176	80	7

* Width dimension of top exceeds roller frame width

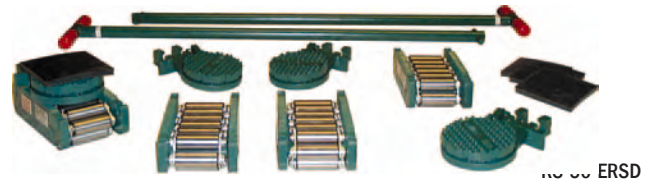
** Height to top of spike



ERS SERIES

- **DELUXE KITS 15 - 50 TONS**
- **ECONOMY SETS 15 - 400 TONS**

With or without a kit case, these prepackaged Kits or Sets are the value leaders of the **Hilman Roller** line. Economy Sets, without kit boxes, are available in capacities from 15 to 400 tons. **Hilman's** Deluxe Kits and Economy Sets contain four basic ERS Rollers, which can be used as is for straight line moving. Four swivel locking attachments with diamond steel tops are included, along with four preload pads and two steering handles. Handles in the Sets vary in length according to the capacity of the rollers; Kit handles are a two piece knockdown style to fit into the steel case. All the deluxe gear necessary for your important project is provided.



KIT/SET	KIT AND SET CAPACITY	PRODUCT	NUMBER	KIT / SET INCLUDES	WEIGHT
(TONS)				(ALL KITS Include Steel Cases)	lb kg
15	KRS-15-ERSD	(4) 3.75-ERS Rollers			181 82
15	RS-15-ERSD	(4) T-3.75-LD Swivel Locking Diamond Attachments			130 59
		(4) P-1 Preload Pads			
		(2) KDH48E Kit Size Handles in Kit Or (2) H36E 36" Handles in Set			
20	KRS-20-ERSD	(4) 5-ERS Rollers			201 91
20	RS-20-ERSD	(4) T-5-LD Swivel Locking Diamond Attachments			150 68
		(4) P-1 Preload Pads			
		(2) KDH48E Kit Size Handle in Kit Or (2) H36E 36" Handles in Set			
40	KRS-40-ERSD	(4) 10-ERS Rollers			241 109
40	RS-40-ERSD	(4) T-10-LD Swivel Locking Diamond Attachments			196 89
		(4) P-1 Preload Pads			
		(2) KDH48E Kit Size Handles in Kit Or (2) H48E 48" Handles in Set			
50	KRS-50-ERSD	(4) 12.5-ERS Rollers			249 113
50	RS-50-ERSD	(4) T-12.5-LD Swivel Locking Diamond Attachments			204 93
		(4) P-1 Preload Pads			
		(2) KDH48E Kit Size Handles in Kit Or (2) H48E 48" Handles in Set			
100	RS-100-ERSD	(4) 25-ERS Rollers			514 233
		(4) T-25-LD Swivel Locking Diamond Attachments			
		(4) P-2 Preload Pads			
		(2) H48E 48" Handles in Set			
260	RS-260-ERSD	(4) 65-ERS Rollers			870 395
		(4) T-65-LD Swivel Locking Diamond Attachments			
		(4) P-2 Preload Pads			
		(2) H60E 60" Handles in Set			
400	RS-400-ERSD	(4) 100-ERS Rollers			906 411
		(4) T-100-LD Swivel Locking Diamond Attachments			
		(4) P-2 Preload Pads			
		(2) H60E 60" Handles in Set			

• INDIVIDUAL ROLLERS 3.75 - 100 TONS

Hilman's ERS rollers are the lowest profile high capacity rollers in the world! Utilizing the endless chain concept, the basic individual ERS Roller is designed for straight line motion, yet each can be outfitted with a removable swivel attachment for turning and positioning. Seven capacities are available.



CAP	PRODUCT	HEIGHT	WIDTH	LENGTH	WEIGHT	CONTACT
(TONS)	NUMBER	in mm	in mm	in mm	lb kg	ROLLS
3.75	3.75-ERS	2 - 3/4 70	4 - 7/16 113	8 - 5/8 219	15 7	6
5	5-ERS	2 - 3/4 70	5 - 5/16 135	8 - 5/8 219	20 9	5
10	10-ERS	3 - 3/8 86	5 - 3/16 132	10 - 3/8 264	29 13	5
12.5	12.5-ERS	3 - 3/8 86	5 - 5/8 143	10 - 3/8 264	31 14	5
25	25-ERS	4 - 3/4 121	7 - 1/4 184	15 - 3/4 400	79 36	5
65	65-ERS	5 - 5/8 143	7 - 3/8 187	23 584	156 71	7
100	100-ERS	5 - 5/8 143	7 - 7/8 200	23 584	165 75	7

• SWIVEL ATTACHMENTS

For the ultimate versatility, each **Hilman** ERS Series Roller can be outfitted with an ERS Swivel Attachment. Attachments add minimal height to the basic roller, while providing ability to make turns without jacking the equipment. Featuring chrome steel ball bearings for smooth operation, attachments come with diamond steel or padded tops and swivel locking devices. Padded attachments help minimize metal-to-metal slippage. Height Equalizers, which increase the height of the roller to that of a roller without swivel attachment, are also available for each roller size.



PRODUCT NUMBERS	FITS	ATTACHMENT PLUS ROLLER	DIAMOND (D)	ATTACHMENT	LENGTH *	WEIGHT
SWIVEL	INDIVIDUAL	PADDED (P)	STYLE	WIDTH	in mm	lb kg
LOCKING	LOCKING	STYLE	HEIGHT *	in mm		
DIAMOND	PADDED	PRODUCT	HEIGHT *	in mm		
GRIP TOP	TOP	NUMBER	in mm			
T-3.75-LD	T-3.75-LP	3.75-ERS	4 - 11/16 119	4 - 7/16 113	5 - 7/8 149	10 - 3/4 273 13 6
T-5-LD	T-5-LP	5-ERS	4 - 11/16 119	4 - 7/16 113	5 - 7/8 149	10 - 3/4 273 13 6
T-10-LD	T-10-LP	10-ERS	5 - 5/16 135	5 - 1/16 129	5 - 7/8 149	12 - 1/2 318 14 6
T-12.5-LD	T-12.5-LP	12.5-ERS	5 - 5/16 135	5 - 1/16 129	5 - 7/8 149	12 - 1/2 318 14 6
T-25-LD	T-25-LP	25-ERS	7 - 15/16 202	7 - 1/16 179	8 203	18 - 19/32 472 42 19
T-65-LD	T-65-LP	65-ERS	8 - 13/16 224	7 - 15/16 202	8 - 3/8 213	25 - 3/8 645 47 21
T-100-LD	T-100-LP	100-ERS	8 - 13/16 224	7 - 15/16 202	8 - 3/8 213	25 - 3/8 645 47 21



LIGHT DUTY SERIES

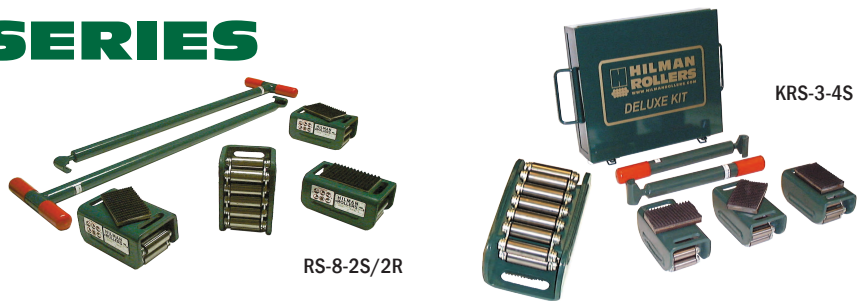
• RIGGERS KITS AND SETS 3 AND 8 TONS

Handy **Hilman** Riggers Kits and Sets are sure to be the most valuable maintenance tools in the crib! With a limitless variety of uses, they provide the ability to move up to 3 tons or 8 tons. Both Sets and Kits contain two steering handles and four padded rollers, which are offered either with all four swivel tops or with two swivel and two rigid tops. Sturdy carrying cases store all items in the kits. Sets are provided without the case.



• INDIVIDUAL ROLLERS .75 AND 2 TONS

Featuring **Hilman's** endless chain action design, Light Duty Series Rollers come in either rigid or swivel type. Both versions are available topped with rugged no-slip pads or in a smooth top style, ideal for permanent mounting applications. Light Duty Series Rollers are low in height and high in capacity, combining the advantages of minimal lifting with controlled moving. Steering handle model H36T (36" / 914 mm) is available for the swivel rollers.



KIT / SET		ROLLER	KIT / SET	KIT / SET INCLUDES	WEIGHT	
CAPACITY		CAPACITY	PRODUCT	(All KITS include steel cases)	lb	kg
(TONS)	(TONS)	NUMBER		Steel Case Kit Box KB-D1: 16" (406mm) x 12.375" (314) x 4.44" (113mm)		
3	0.75	KRS-3-4S	(4) 0.75-SP Rollers, (2) 3-KH Kit Size Handles		55	25
3	0.75	RS-3-4S	(4) 0.75-SP Rollers, (2) H36T 36" Handles		52	24
3	0.75	KRS-3-2S/2R	(2) 0.75-SP Rollers, (2) 0.75-RP Rollers, (2) 3-KH Kit Size Handles		55	25
3	0.75	RS-3-2S/2R	(2) 0.75-SP Rollers, (2) 0.75-RP Rollers, (2) H36T 36" Handles		52	24
8	2	KRS-8-4S	(4) 2-SP Rollers, (2) 8-KH Kit Size Handles		85	39
8	2	RS-8-4S	(4) 2-SP Rollers, (2) H36T 36" Handles		76	35
8	2	KRS-8-2S/2R	(2) 2-SP Rollers, (2) 2-RP Rollers, (2) 8-KH Kit Size Handles		85	39
8	2	RS-8-2S/2R	(2) 2-SP Rollers, (2) 2-RP Rollers, (2) H36T 36" Handles		76	35

CAPACITY	PRODUCT	TOP	HEIGHT	WIDTH	LENGTH	WEIGHT	CONTACT				
(TONS)	NUMBER	STYLE	in	mm	in	mm	in	mm	lb	kg	ROLLS
.75	.75-SP	SWIVEL	3-5/16	84	3-5/8	92	6-1/2	165	9	4	6
2	2-SP	PADDED	3-15/16	100	4-1/8	105	6-1/2	165	15	7	4
.75	.75-SS	SWIVEL	3-5/16	84	3-5/8	92	6-1/2	165	9	4	6
2	2-SS	SMOOTH	3-11/16	94	4-1/8	105	6-1/2	165	15	7	4
.75	.75-RP	RIGID	3-1/8	79	3-5/8	92	6-1/2	165	9	4	6
2	2-RP	PADDED	3-5/8	92	4-1/8	105	6-1/2	165	15	7	4
.75	.75-RS	RIGID	2-3/4	70	3-5/8	92	6-1/2	165	9	4	6
2	2-RS	SMOOTH	3-1/4	83	4-1/8	105	6-1/2	165	15	7	4



NYTON SERIES

• NYTON KITS 2 - 24 TONS • NYTON SETS 2 - 40 TONS

Moving heavy equipment on delicate floors? **Hilman's** Nyton Kits and sets are for you! These conveniently prepackaged Kits and Sets provide the advantage of a heavy duty chain action roller that can safely move equipment on modern coated, painted or epoxy topped floors without scarring the surface. Nyton Kits come with a heavy duty, lockable case to store all items between moves. All Kits and Sets contain four padded swivel rollers and two steering handles. The rollers in the larger kit capacities from 8 tons and up feature swivel locking devices.

• INDIVIDUAL ROLLERS .5 AND 10 TONS



KIT / SET	KIT / SET	KIT / SET INCLUDES	WEIGHT	
CAPACITY	PRODUCT	(All KITS include steel cases)	lb	kg
(TONS)	NUMBER			
2	KNRS-2-4S	(4) N.5-SP Rollers; (2) 3-KH Kit Size Handles	47	21
2	NRS-2-4S	(4) N.5-SP Rollers, (2) H36T 36" Handles in Set	44	20
2	KNRS-2-2S/2R	(2) N.5-SP Rollers, (2) N.5-RP Rollers, (2) 3-KH Kit Size Handles	45	20
2	NRS-2-2S/2R	(2) N.5-SP Rollers, (2) N.5-RP Rollers, (2) H36T 36" Handles in Set	42	19
4	KNRS-4-4S	(4) N1-SP Rollers, (2) 8-KH Kit Size Handles	69	31
4	NRS-4-4S	(4) N1-SP Rollers, (2) H36T 36" Handles in Set	60	27
4	KNRS-4-2S/2R	(2) N1-SP Rollers, (2) N1-RP Rollers, (2) 8-KH Kit Size Handles	69	31
4	NRS-4-2S/2R	(2) N1-SP Rollers, (2) N1-RP Rollers, (2) H36T 36" Handles in Set	60	27
8	KNRS-8-SLP	(4) N2-SLP Rollers, (2) KDH48F Kit Size Handles	179	81
8	NRS-8-SLP	(4) N2-SLP Rollers, (2) H48F 48" Handles in Set	136	62
12	KNRS-12-SLP	(4) N3-SLP Rollers, (2) KDH48F Kit Size Handles	179	81
12	NRS-12-SLP	(4) N3-SLP Rollers, (2) H48F 48" Handles in Set	136	62
24	KNRS-24-SLP	(4) N6-SLP Rollers, (2) KDH48F Kit Size Handles	203	92
24	NRS-24-SLP	(4) N6-SLP Rollers, (2) H48F 48" Handles in Set	160	73
40	NRS-40-SLP	(4) N10-SLP Rollers, (2) H60F 60" Handles	458	208

CAPACITY	PRODUCT	HEIGHT	WIDTH	LENGTH	WEIGHT	CONTACT				
(TONS)	NUMBER	in	mm	in	mm	lb	kg	ROLLS		
.5	N.5-SP	3-7/16	87	3-5/8	92	6-1/2	165	7	3	6
1	N1-SP	3-15/16	100	4-1/8	105	6-1/2	165	12	5	4
2	N2-SLP*	5	127	5-3/4	146	10-1/2	267	28	13	5
3	N3-SLP*	5-1/4	133	5-3/4	146	10-1/2	267	29	13	5
6	N6-SLP	5-1/8	130	6-3/8	162	12-3/4	324	36	16	6
10	N10-SLP	8	203	8	203	15	381	100	45	6
.5	N.5-RP	3-1/8	79	3-5/8	92	6-1/2	165	6	3	6
1	N1-RP	3-5/8	92	4-1/8	105	6-1/2	165	11	5	4
2	N2-RP*	4-3/16	106	5-3/4	146	10-1/2	267	23	10	6
3	N3-RP*	4-7/16	113	5-3/4	146	10-1/2	267	24	11	5
6	N6-RP	4-5/16	110	6-3/8	162	12-3/4	324	31	14	6
10	N10-RP	6-3/4	171	8	203	15	381	86	39	6

Combine solid, high impact nylon roll material with **Hilman's** continuous chain action design and the result is NYTON - a high capacity moving device that protects delicate floor surfaces during heavy moves. 1/2 and 1 ton capacity Nyton Rollers are available in padded swivel or rigid styles. 2, 3, 6 and 10 ton capacities are available in padded swivel-locking or rigid styles. All tops feature built-in pads, providing a non-slip surface able to compress over uneven surfaces, giving further floor surface protection. Steering handles are available for these rollers. H36T (36" / 914 mm) for the 1/2 and 1 ton capacity Swivel Nyton rollers. H36F (36" / 914 mm), H48F (48" / 1219 mm), H60F (60" / 1524 mm) for the 2 ton and up Swivel Locking Nyton rollers.

*Width dimension of top exceeds roller frame width



OT, NT, T SERIES

• INDIVIDUAL ROLLERS .75 - 75 TONS

NT-Style



T-Style

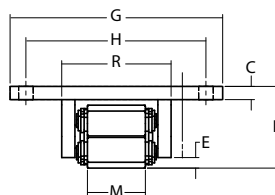


T-Style

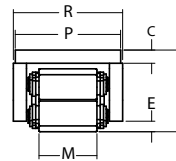
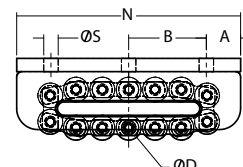


A variety of top plate styles, exceptionally strong materials of construction and a wide range of modification possibilities make OT, T and NT Rollers the true OEM leaders of the **Hilman Roller** line! Rollers in this series are built for long life and a wide range of operating conditions. For basic linear motion, these rollers are used as bearing sides, conveyors, guides, casters or dollies. Typical applications include the straight motion required for thermal expansion under a furnace or heat exchanger, as slides under nuclear shield doors, upside down as a conveyor in heavy die handling carts, in concrete forming for the casting and curing process as well in the launching of heavy segments, attached to a cradle for the launching of huge ships or as a heavy duty wheel-like device to mobilize grandstand seats.

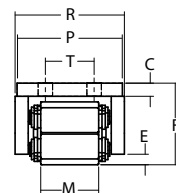
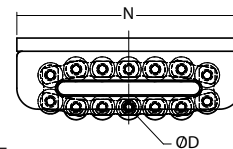
The OT type has an oversized top, the T type has a flush top and the NT type has a long narrow top. The top plates add extra strength to the frame and variety to mounting capabilities, making one type ideal for cavity mount, bolt-on or weld mount. OT and NT Rollers are available with standard top plate sizes and mounting hole pattern, which can be modified to customer specifications. **Hilman** Elastomeric Preload Pads are available in either fabric impregnated or neoprene form for each roller model.



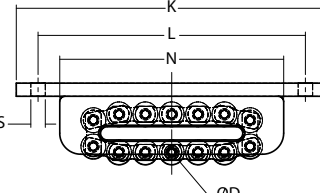
OT STYLE



T STYLE



NT STYLE



PRODUCT NUMBERS

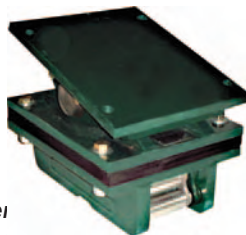
OT	NT	T	CAPACITY	□	□	□	DIMENSIONS (inches / mm)	□	□	□	□	□	□	□	□	□	□	□	□	CONTACT ROLLS	WEIGHT lb / kg
STYLE	STYLE	STYLE	(TONS)	□	□	□	B	C	D	E	F	G	H	K	L	M	N	P	R	S	T
.75-OT	.75-NT	.75-T	□	3/4	2-1/2	3/8	11/16	3/8	3-1/8	7	5-1/2	8	7-1/4	2	6-1/2	3-1/2	3-5/8	5/16	2	5	13
□	□	□	19	64	10	17	10	79	178	140	203	184	51	165	89	92	8	51	6	6	5
1-OT	1-NT	1-T	1	1/2	2-1/2	1/2	11/16	3/8	2-3/8	6	4-3/4	8	7	2	6	3-1/2	3-9/16	9/16	1-7/8	5	11
□	□	□	13	64	10	17	10	60	152	121	203	178	51	152	89	91	14	48	5	5	4
2.5-OT	2.5-NT	2.5-T	2.5	3/4	2-1/2	3/8	15/16	3/8	3-5/8	7	5-1/2	9-1/2	8	2-7/16	6-1/2	4	4-1/8	9/16	2	4	19
□	□	□	19	64	10	24	10	92	178	140	241	203	62	165	102	105	14	51	9	9	8
5-OT	5-NT	5-T	5	3/4	3-1/4	3/8	15/16	7/16	3-1/8	8	6-3/4	11-3/4	10-1/8	2-7/16	8	4-1/2	4-7/16	9/16	3	5	22
□	□	□	19	83	10	24	11	79	203	171	298	257	62	203	114	113	14	76	10	10	9
8-OT	8-NT	8-T	8	3/4	3-1/4	3/8	15/16	7/16	3-1/8	8	6-3/4	11-3/4	10-1/8	3-5/16	8	5	5-5/16	9/16	3	5	24
□	□	□	19	83	10	24	11	79	203	171	298	257	84	203	127	135	14	76	11	11	10
15-OT	15-NT	15-T	15	1-5/8	3-11/16	5/8	1-3/16	1/2	3-7/8	10	8-1/2	14-3/4	12-11/16	2-3/4	10-5/8	5	5-3/16	11/16	2-5/16	5	47
□	□	□	41	94	16	30	13	98	254	216	375	322	70	270	127	132	17	59	21	19	17
20-OT	20-NT	20-T	20	1-5/8	3-11/16	5/8	1-3/16	1/2	3-7/8	10	8-1/2	14-3/4	12-11/16	2-3/4	10-5/8	6-1/2	6-7/16	11/16	3-1/2	5	54
□	□	□	41	94	16	30	13	98	254	216	375	322	102	270	165	164	17	89	25	24	21
37.5-OT	37.5-NT	37.5-T	37.5	2	5-1/2	3/4	1-5/8	5/8	5-1/2	12	10-1/2	21	18-3/4	3-1/2	15	7	7-1/4	13/16	4-1/4	5	119
□	□	□	51	140	19	41	16	140	305	267	533	476	89	381	178	184	21	108	54	51	47
50-OT	50-NT	50-T	50	3-3/4	5-1/2	3/4	1-5/8	5/8	5-1/2	12	10-1/2	22-1/2	20-1/4	3-1/2	18-1/2	7	7-1/4	13/16	4-1/4	7	153
□	□	□	95	140	19	41	16	140	305	267	572	514	89	470	178	184	21	108	69	64	61
75-OT	75-NT	75-T	75	1-1/4	9-1/4	1	1-15/16	1/2	6-3/4	14	11-1/2	27	24	3-5/8	21	7-1/2	7-3/8	1-1/16	5	7	241
□	□	□	32	235	25	49	13	171	356	292	686	610	92	533	191	187	27	127	109	95	90

• OT, NT SERIES TURNTABLES • OT SERIES ROCKER TOPS

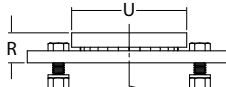
NT with Turn



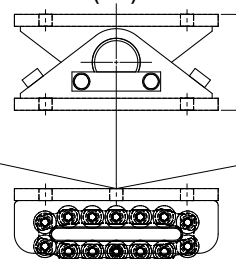
OT with LRP



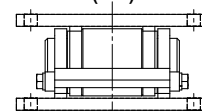
Turntable (TT)



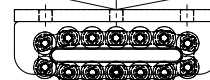
Longitudinal Type (LRP)



Transverse Type (TRP)



Basic OT Roller



Turntables are available for OT and NT Series roller capacities from 5 tons to 75 tons. Turntables bolt to the base roller unit and allow the roller to swivel and provide some freedom of lateral motion in **Hilman Roller Accu-Roll** applications where tracks aren't perfectly parallel. Connection hardware is included. Transverse (TPR) and Longitudinal (LRP) Rocker tops for the OT Series contain two attachment plates connected by a pivot pin assembly. Rockers are designed to be bolted to the base roller unit, then attached to either the load or the surface, enabling the roller to follow an incline or to allow a load to be tilted, launched or more accurately positioned. Connection hardware is included.

□	PRODUCT NUMBERS	□	FITS	□	DIMENSIONS	□	□	WEIGHTS
TURNABLES	ROCKERS	ROLLER	MODEL	□	in / mm	TURNABLES / ROCKERS	lb	kg
T-OT	T-NT	LRP	TRP	5-OT/NT	R	U	T	□
T-5-OT	T-5-NT	5-LRP	5-TRP	5-OT/NT	1-1/2	38	6	152
T-8-OT	T-8-NT	8-LRP	8-TRP	5-OT/NT	1-1/2	38	6	152
T-15-OT	T-15-NT	15-LRP	15-TRP	15-OT/NT	1-1/2	38	6	152
T-20-OT	T-20-NT	20-LRP	20-TRP	20-OT/NT	1-1/2	38	6	152
T-37.5-OT	T-37.5-NT	37.5-LRP	37.5-TRP	37.5-OT/NT	2-3/8	60	8	203
T-50-OT	T-50-NT	50-LRP	50-TRP	50-OT/NT	2-3/8	60	8	203
T-75-OT	T-75-NT	75-LRP	75-TRP	75-OT/NT	2-3/8	60	8	203



SHD SERIES

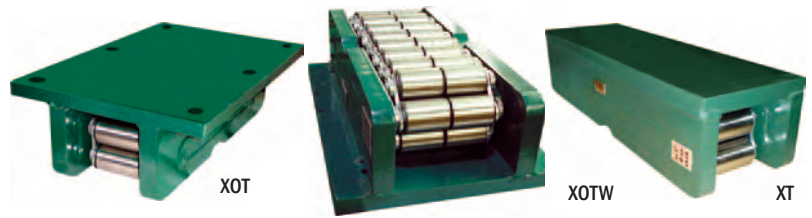
• INDIVIDUAL ROLLERS 100-1000 TONS

Heavy structures skate almost effortlessly on **Hilman's SHD Series (Super Heavy Duty) Rollers!** With load capacities from 100 to 1000 tons per unit, virtually any load is transportable. Typical applications range from installing steam generators or precipitators, rolling entire bridges, advancing launching trusses, skidding drill works aboard offshore rigs, even relocating entire multi-story structures!

The same top plate configurations are available as for **Hilman Roller's OT, T and NT Series.** The "T" style top is flush with the frame body width and length. The "NT" style top overhangs the body at the ends. The "OT" style top overhangs the body sides. 150 and 200 ton SHD Series Rollers have long frame and wide frame configurations as well. Standard hole patterns are supplied in the OT and NT versions. The user can specify no holes if preferred. Special modifications, such as drilled and tapped holes, short or wide versions are also available.



XTWC

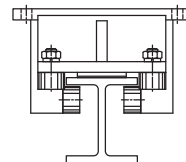


CAPACITY (TONS)	PRODUCT NUMBER	HEIGHT in	HEIGHT mm	TOP PLATE WIDTH in	TOP PLATE WIDTH mm	TOP PLATE LENGTH in	TOP PLATE LENGTH mm	WEIGHT lb	WEIGHT kg	CONTACT ROLLS
100	100-XOT	6-3/4	171	8	203	21	533	217	98	7
150	150-XOTL	6-3/4	171	8	203	32	813	329	149	11
150	150-XOTW	6-3/4	171	9-7/8	251	21	533	307	139	14
200	200-XOTW	6-3/4	171	12	305	21	533	313	142	14
200	200-XOTWC	6-3/4	171	14-1/2	368	21	533	387	176	14
300	300-XOT	10	254	10-3/4	273	34	864	706	320	8
500	500-XOT	10	254	20	508	34	864	1290	585	16
750	750-XOT			consult factory for specifications and weights						
1000	1000-XOT			consult factory for specifications and weights						
100	100-XNT	6-3/4	171	8	203	27	686	242	110	7
150	150-XNTL	6-3/4	171	8	203	38	965	365	166	11
150	150-XNTW	6-3/4	171	9-7/8	251	27	686	280	127	14
200	200-XNTL	6-3/4	171	8	203	42	1067	396	180	14
200	200-XNTW	6-3/4	171	12	305	27	686	333	151	14
200	200-XNTWC	6-3/4	171	14-1/2	368	27	686	408	185	14
300	300-XNT	10	254	10-3/4	273	42	1067	739	335	8
500	500-XNT	10	254	20	508	42	1067	1355	615	16
750	750-XNT			consult factory for specifications and weights						
1000	1000-XNT			consult factory for specifications and weights						
100	100-XOT	6-3/4	171	14	356	21	533	250	113	7
150	150-XOTL	6-3/4	171	14	356	32	813	399	181	11
150	150-XOTW	6-3/4	171	16	406	21	533	299	136	14
200	200-XOTL	6-3/4	171	14	356	36	914	463	210	14
200	200-XOTW	6-3/4	171	21	533	21	533	364	165	14
200	200-XOTWC	6-3/4	171	21	533	21	533	423	192	14
300	300-XOT	10	254	21	533	34	864	849	385	8
500	500-XOT	10	254	30	762	34	864	1430	649	16
750	750-XOT			consult factory for specifications and weights						
1000	1000-XOT			consult factory for specifications and weights						

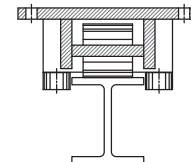
ACCU-ROLL GUIDANCE SYSTEMS

- EXTERNAL GUIDANCE
- UPLIFT PREVENTION
- ALIGNMENT ASSURANCE

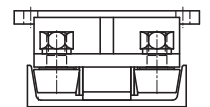
Hilman's Accu-Roll Guidance System, a positive external alignment option, can be added to any **Hilman Roller** as either a removable bolt-on or permanent weld-on system. In applications where load alignment is critical, or close tolerances, repetitive movement or uplift prevention are required, **Accu-Roll** often becomes an ideal solution to these heavy motion issues. Depending on the configuration selected, **Accu-Roll** will allow the roller to track precisely on a flat bar, I-Beam, rail or in a channel or trench. **Accu-Roll** on an OT or NT Roller combined with a turntable can allow the roller to follow a slightly skewed track. **Accu-Roll Guidance Systems** are custom made and available with a wide range of options and in various configurations for virtually any situation or application. Consult factory for recommendations.



TYPE U



TYPE R



TYPE C



"C" System for Channel Roller shown in channel

"R" & "U" Systems for I-Beam Guidance and Uplift Prevention



"R" for Rail Roller shown on I-Beam

WARRANTY



HILMAN WARRANTY

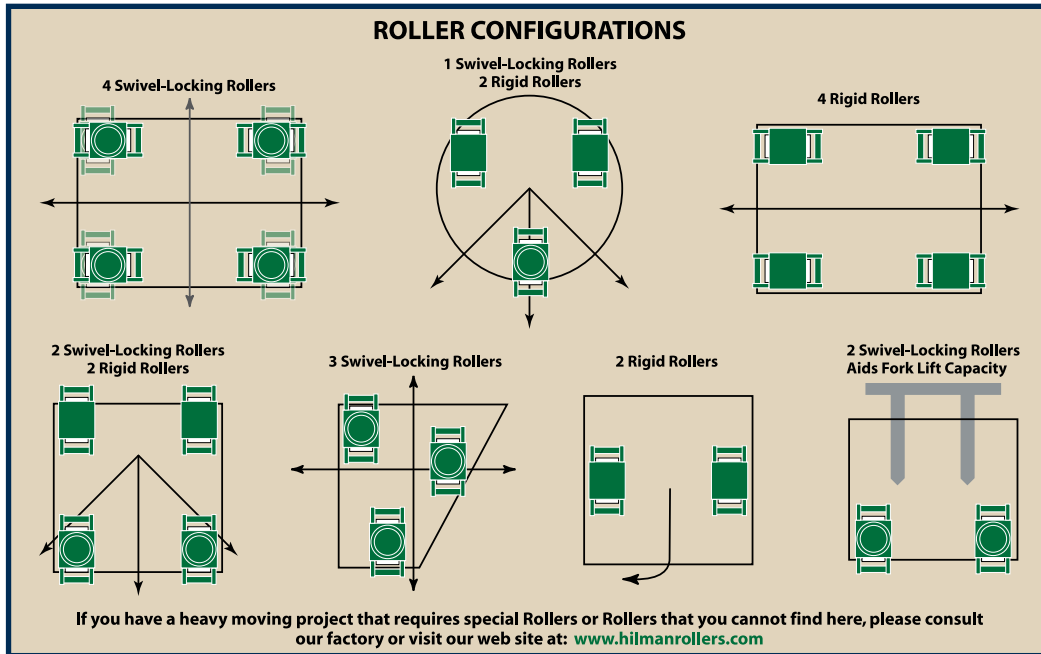
We warrant each new FT, ERS, and Nyton chain-action Roller sold by us to be free from manufacturing defects in normal service for a period of five (5) years commencing with delivery of the roller to the original user. All other Hilman products manufactured by Hilman retain a one (1) year warranty. Our obligation under this warranty is expressly limited to our option, to the replacement or repair at Hilman Rollers, Marlboro, New Jersey 07746 USA, or at a service facility designated by us, of such part or parts as inspection shall disclose to have been defective. This warranty does not apply to defects caused by damage or unreasonable use, including failure to provide reasonable and necessary maintenance, while in the possession of the consumer.

WE SHALL NOT BE LIABLE FOR CONSEQUENTIAL DAMAGES OF ANY KIND, including, but not limited to, consequential labor costs or transportation charges in connection with the replacement or repair of defective parts. We make no warranty with respect to trade accessories. They are subject to the warranties of their manufacturers.

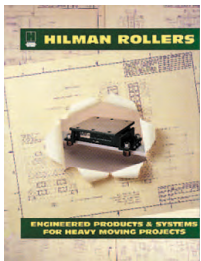
THERE ARE NO WARRANTIES EXCEPT AS ABOVE STATED. HILMAN DISCLAIMS AND EXCLUDES ANY IMPLIED WARRANTY OF MERCHANTABILITY OF ITS GOODS OR WARRANTY OF THE FITNESS OF THOSE GOODS FOR ANY PURPOSE OR USE. Subject to the express one-year warranty provided for the repair or replacement of defective goods, the customer acknowledges that it makes its purchase in reliance upon customers' inspection of the goods purchased from Hilman and not by reason of any representations made by or on behalf of Hilman.

We make no other express warranty, nor is anyone authorized to make any on our behalf. Any and all claims arising against Hilman Rollers or subsidiaries or affiliated firms concerning the use of the Hilman Rollers shall be governed by the laws of the State of New Jersey in the USA.

We Have Been Moving Your Heavy Loads For Over 50 Years!



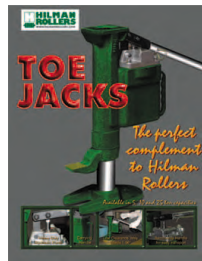
Write us or ask your distributor for these other **HILMAN ROLLERS** brochures:



Engineered Products & Systems for Heavy Moving Projects



Tri-Glide 3-Point Heavy Moving System for All Types of Floors



Toe Jacks - The Perfect Complement to Hilman Roller

Hilman Rollers At Work Series



- Oil & Gas Exploration • Marine and Shipbuilding
- Bridge Construction
- Heavy Construction & Rigging • Pipe and Tunneling
- Power Generation • Nuclear Facilities
- Research Equipment
- Manufactured Home Production and Roll-On
- OEM, Production & Automation, Quick Die Changing
- Industrial Machinery

Your Authorized HILMAN ROLLERS Distributor Is:



HILMAN ROLLERS
WWW.HILMANROLLERS.COM

12 Timber Lane • Marlboro NJ 07746 • USA
tel: (732) 462-6277 • fax: (732) 462-6355
toll free (North America): 1-888-2-ROLL-IT
e-mail: sales@hilmanrollers.com