

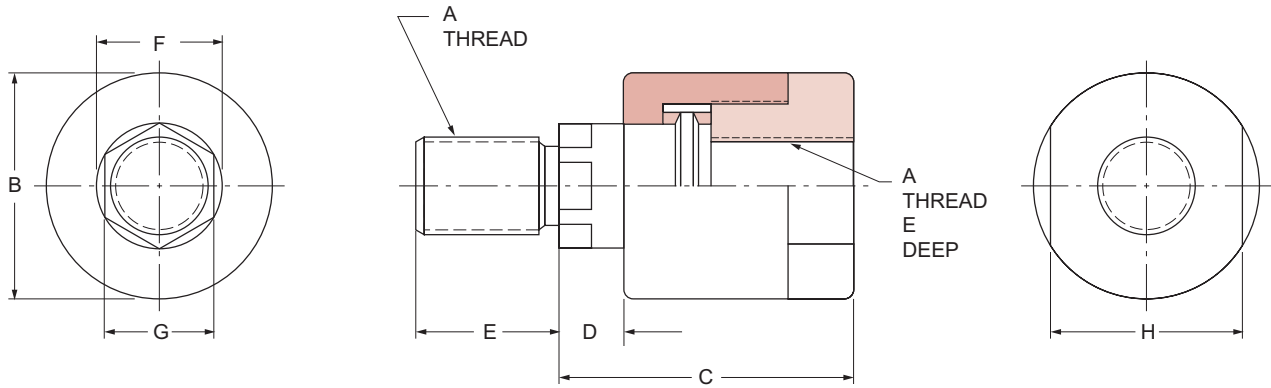
milwaukee
Cylinder

Specials are Our Standard...



...Your Economy is in Our Quality

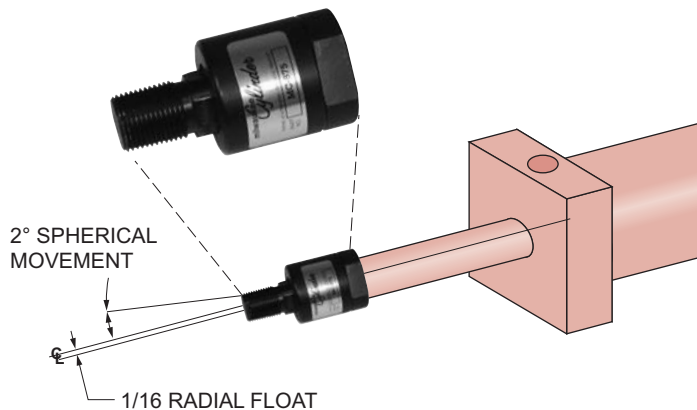
Linear Alignment Coupler



PART NO.	A THREAD	B BODY DIAMETER	C BODY LENGTH	D SHANK LENGTH	E THREAD LENGTH	F SHANK DIAMETER	G FLATS	H FLATS	MAXIMUM RATED LOAD (LBS.)	MAXIMUM LOAD @ YIELD (LBS.)
MC-312	5/16 - 24	7/8	1 1/4	1/4	5/8	5/16	1/4	3/4	2,075	8,300
MC-375	3/8 - 24	7/8	1 1/4	1/4	5/8	5/16	5/16	3/4	2,075	8,300
MC-437	7/16 - 20	1 1/4	2	1/2	3/4	5/8	1/2	1	2,500	10,000
MC-500	1/2 - 20	1 1/4	2	1/2	3/4	5/8	1/2	1	3,500	14,000
MC-625	5/8 - 18	1 1/4	2	1/2	3/4	5/8	1/2	1	4,750	19,000
MC-750	3/4 - 16	1 3/4	2 5/16	1/2	1 1/8	31/32	7/8	1 1/2	8,500	34,000
MC-875	7/8 - 14	1 3/4	2 5/16	1/2	1 1/8	31/32	7/8	1 1/2	9,750	39,000
MC-1000	1 - 14	2 1/2	2 15/16	1/2	1 5/8	1 3/8	1 5/32	2 1/4	16,000	64,000
MC-1250	1 1/4 - 12	2 1/2	2 15/16	1/2	1 5/8	1 3/8	1 5/32	2 1/4	19,500	78,000
MC-1500	1 1/2 - 12	3 1/4	4 3/8	13/16	2 1/4	1 3/4	1 1/2	3	33,500	134,000
MC-1750	1 3/4 - 12	3 1/4	4 3/8	13/16	2 1/4	1 3/4	1 1/2	3	33,500	134,000
MC-1875	1 7/8 - 12	3 3/4	5 7/16	7/8	3	2	1 7/8	3 1/2	60,000	240,000
MC-2000	2 - 12	3 3/4	5 7/16	7/8	3	2	1 7/8	3 1/2	60,000	240,000

1. All dimensions are subject to change by manufacturer
2. Larger sizes and special designs available. Consult factory.
3. Use jam nut to lock coupler to rod when used with full diameter threads.
4. Use "max. rated load" for 4:1 safety factor.

Eliminate alignment problems. Install a Linear Alignment coupler.



Features...

- Reduces rod seal and bearing wear
- Prevents binding and erratic movement caused by misalignment
- Permits a greater tolerance between cylinder centerline and mating member
- Works equally well in "push" or "pull" applications

5877 S. Pennsylvania Avenue • P.O. Box 100498 • Cudahy, Wisconsin 53110-6108 USA

www.milwaukeeecylinder.com • sales@milwaukeeecylinder.com

Phone: 414-769-9700 • Fax: 414-769-0157